

Customer Remarks:

Sr.No: HE/NC/001/13

Approved:

Checked: Sanjay Modi

Prepared: Jigar Soni

Date: 18.05.2013



Rev No: R1

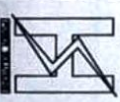
Scale: N.T.S

Sheet: 8

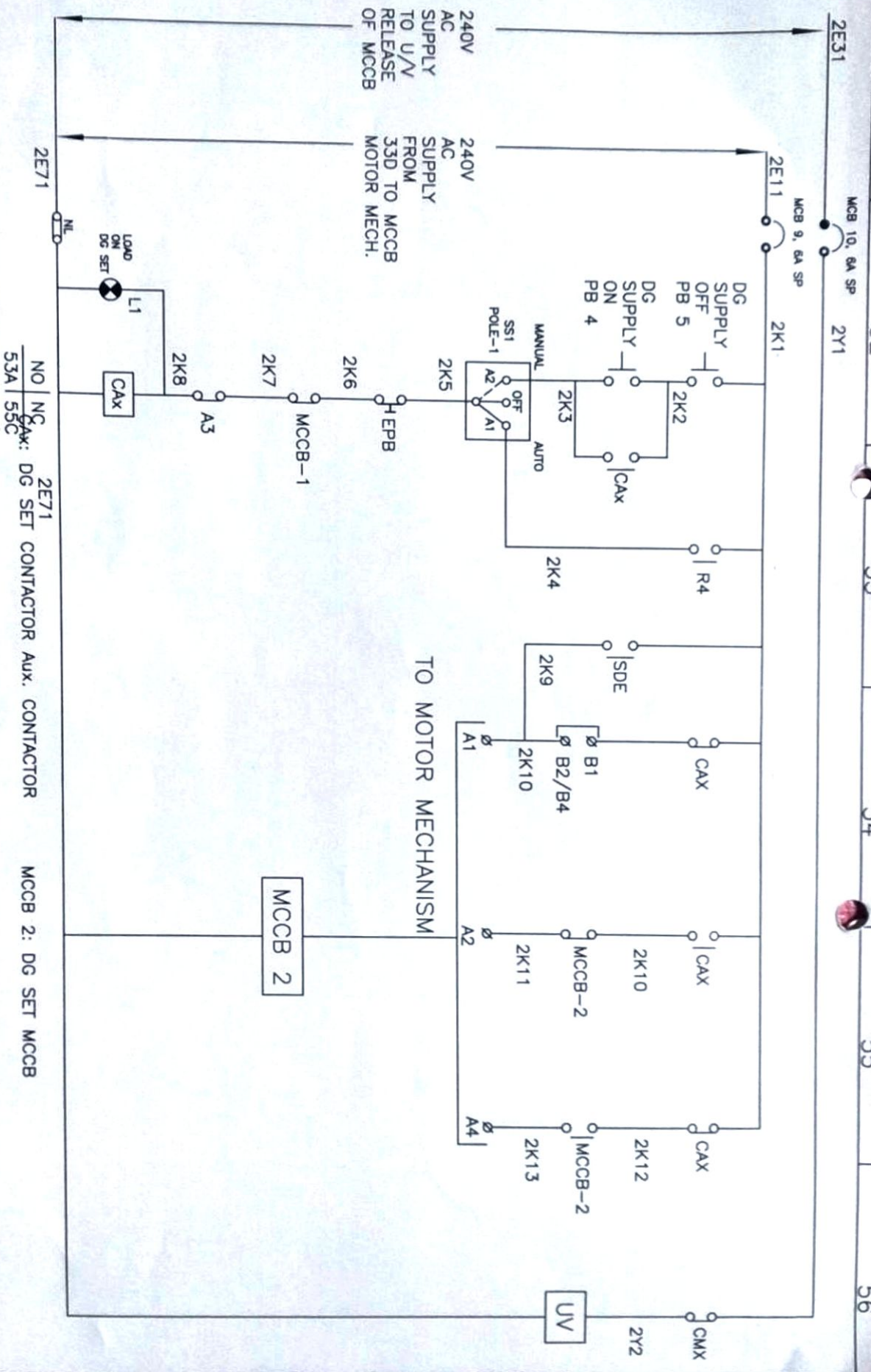
Power Dist. Board

Client:- M/s. (n) CODE SOLUTIONS
A Div. OF GNFC Ltd.
Ahmedabad

Title: TERMINAL BLOCK DETAILS.



HI TECH ENGINEERS
A-702, Shapath-N, Opp. Karmaveer Club,
S.G. Road, Ahmedabad-380 051
Gujarat, India.
Ph. No. +91-79-30072077, 30072078
Email : info@hitechcontrolpanel.com



Customer Remarks:

Sr.No: HE/NC/001/13



Power Dist. Board

Title: DG SET MCCB CONTROL CKT.

Approved:

Sanjay Modi

Client:- M/s. (n) CODE SOLUTIONS

HI TECH ENGINEERS

Checked: Jigar Soni

Rev No: R1

A Div. OF GNFC Ltd.

A-702, Shapath-N, Gop. Karmaveer Club,

Date: 18.05.2013

Scale: N.T.S

Ahmedabad

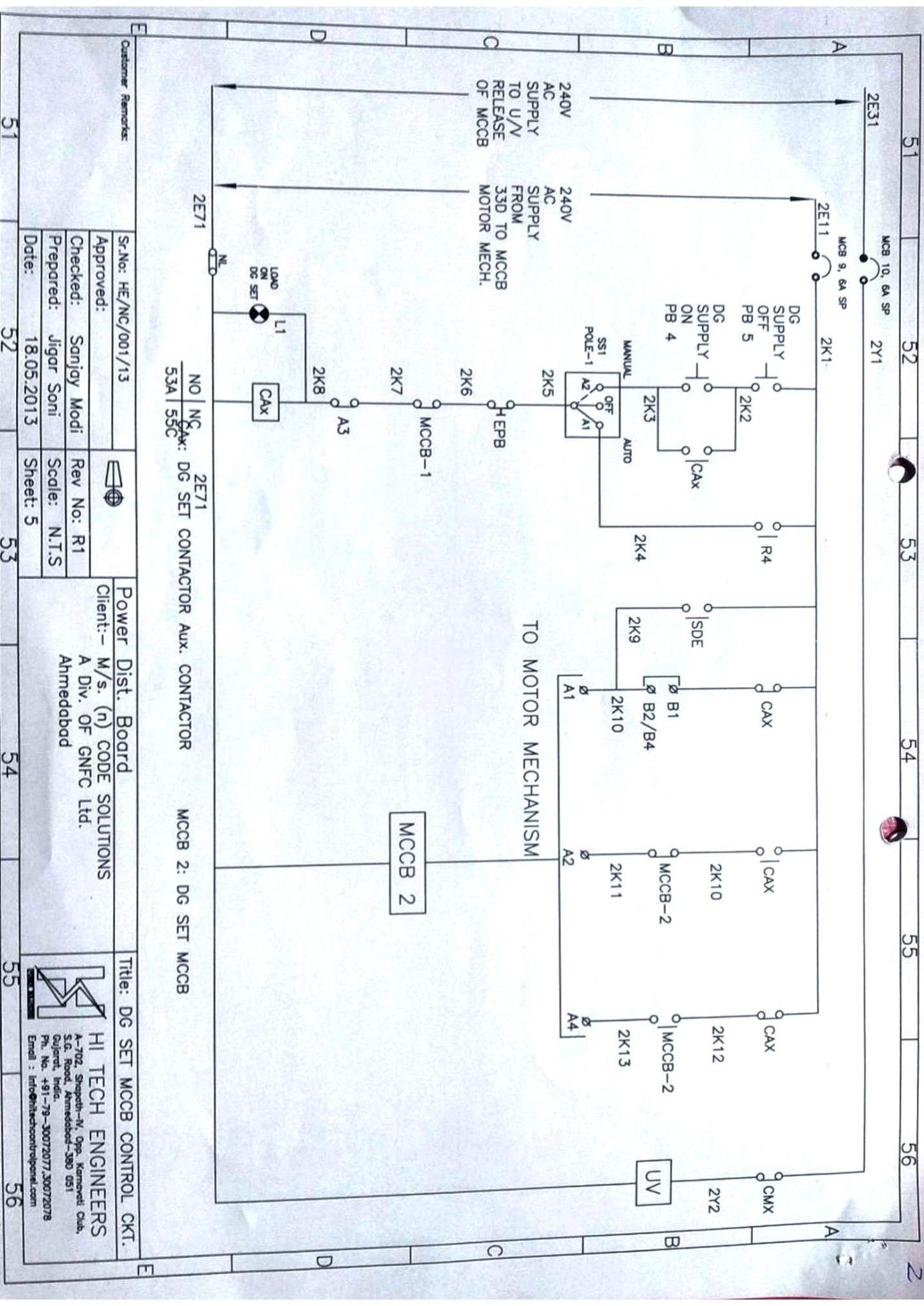
S.O. Road, Ahmedabad-380 051


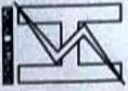
Sheet: 5

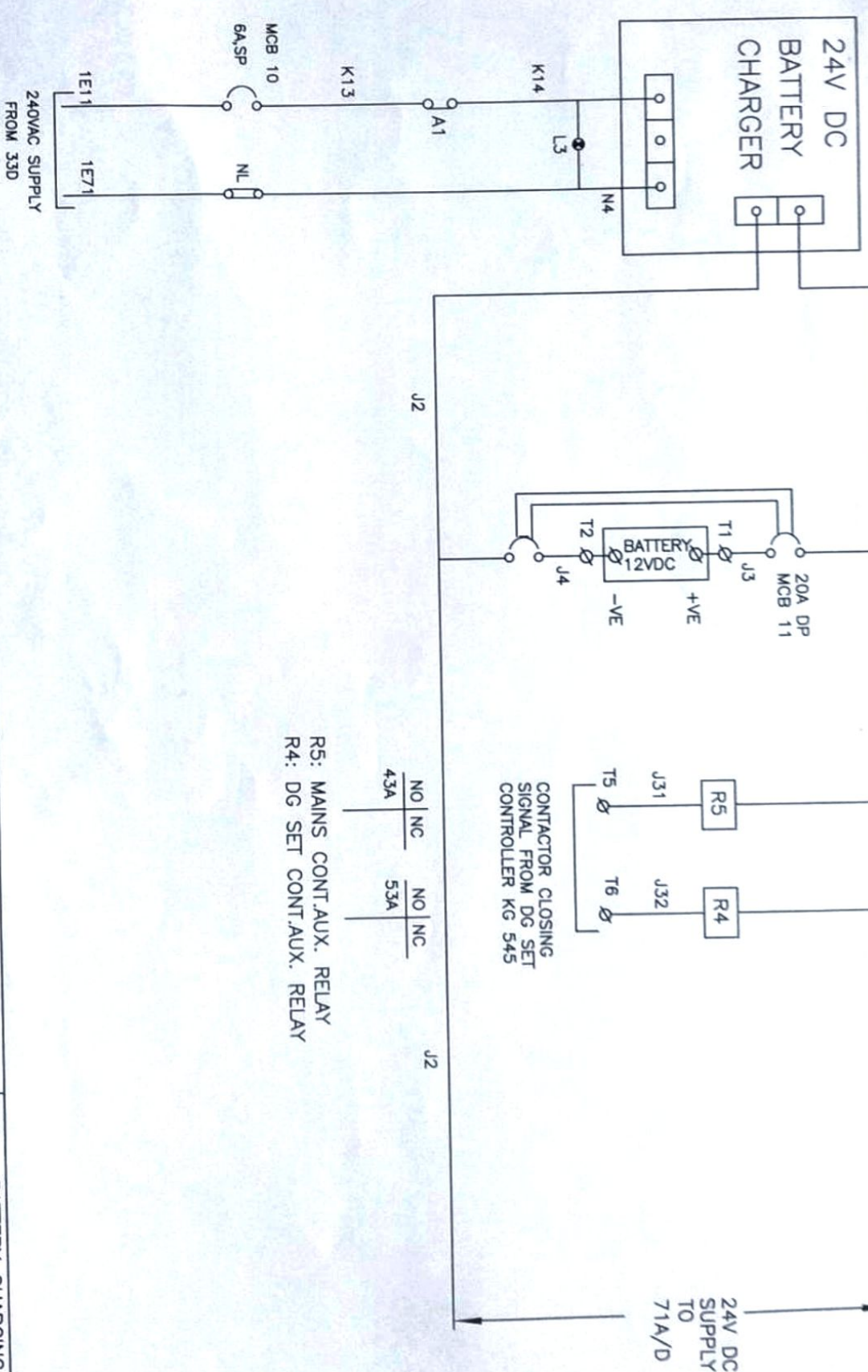
52

53

54



Customer Remarks:	Sr.No: HE/NC/001/13		Power Dist. Board	The: DG SET MCCB CONTROL CKT.
	Approved:			
	Checked: Sanjiv Modi			
	Prepared: Jigar Soni			
Date: 18.05.2013	Sheet: 5	Rev No: R1	Scale: N.T.S	
NO NC 2E71		Title: DG SET MCCB CONTROL CKT.		
53A 55C		Client:- M/s. (n) CODE SOLUTIONS		
53A 55C		A Div. OF GNFC Ltd.		
53A 55C		Ahmedabad		
53A 55C		 HI TECH ENGINEERS A-702, Shagathi-N, Opp. Karmaveer Club, S.G. Road, Ahmedabad-380 051 Gujarat, India. Ph. No. +91-79-30072077,30072078 Email : info@hitechcontrolpanel.com		



R5: MAINS CONT.AUX. RELAY
 R4: DG SET CONT.AUX. RELAY

NO	NC	NO	NC
43A		53A	

Customer Remarks:

Sr.No: HE/NC/001/13

Approved:

Checked: Sanjay Modi

Prepared: Jigar Soni

Date: 18.05.2013



Rev No: R1

Scale: N.T.S

Sheet: 6

Power Dist. Board

Client:- M/s. (n) CODE SOLUTIONS
 A Div. OF GNFC Ltd.
 Ahmedabad

Title: BATTERY CHARGING CKT.



HI TECH ENGINEERS
 A-702, Shepath-N, Opp. Karmaveer Club,
 S.G. Road, Ahmedabad-380 051
 Gujarat, India. Ph. No. +91-79-30072077, 30072078
 Email : info@hitechcontrolpanel.com

61

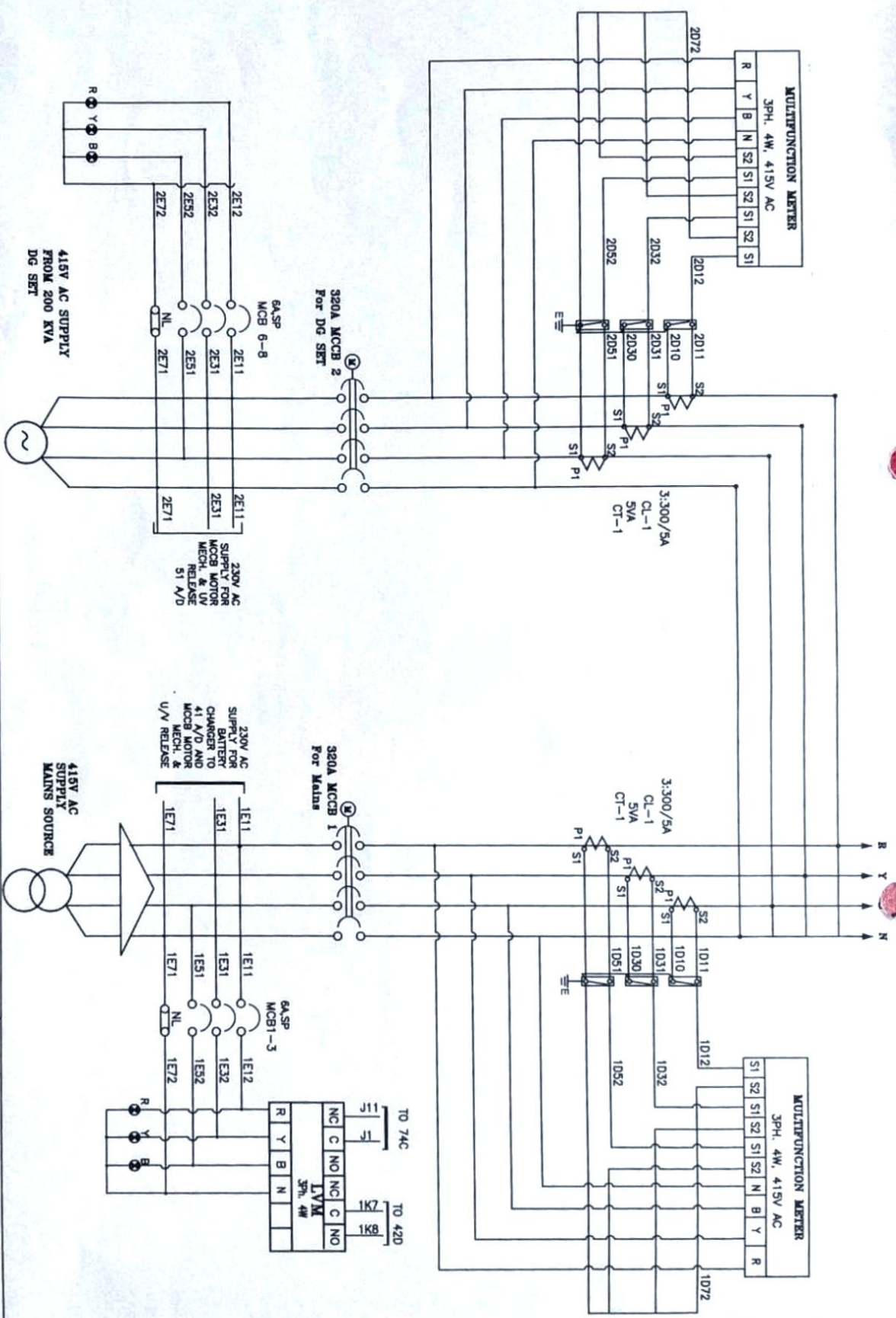
62

63

64

65

66



Customer Remarks:

Sr.No: HE/NC/001/13

Approved: 00

Checked: Sanjay Modi

Prepared: Jigar Soni

Date: 18.05.2013

Power Dist. Board

Client:- M/s. (n) CODE SOLUTIONS

A Div. OF GNFC Ltd.

Ahmedabad

Title: LEGEND

HI TECH ENGINEERS

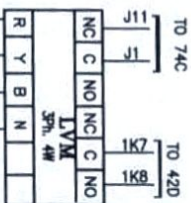
A-702, Shepath-N, Opp. Karmaveel Club,

S.G. Road, Ahmedabad-380 051

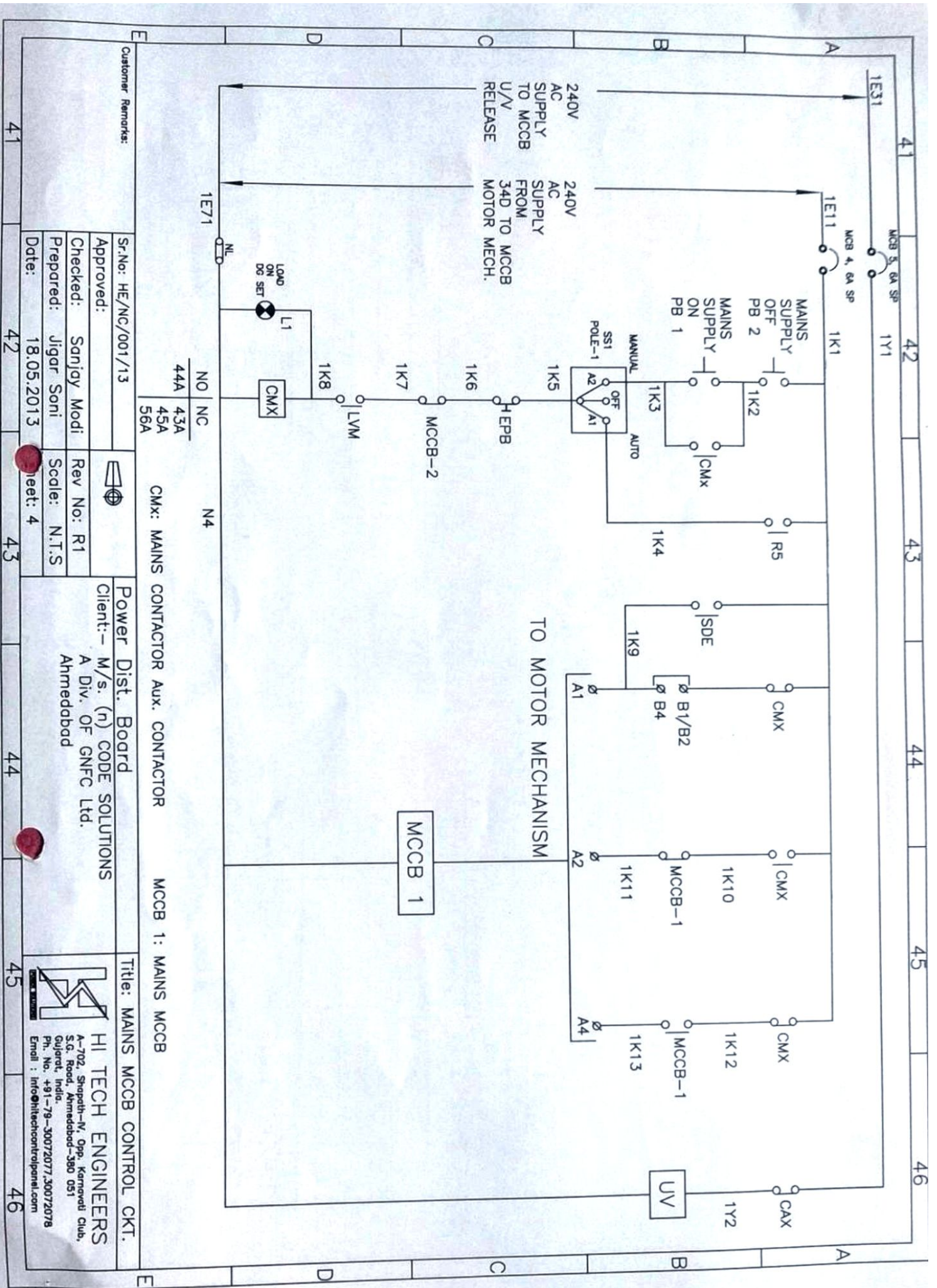
Gujarat, India.

Ph. No. +91-79-30072077,30072078

Email : info@hitechcontrolpanel.com



21 22 23 24 25 26



Customer Remarks:

Sr.No: HE/NC/001/13

Approved:

Checked: Sanjay Modi

Prepared: Jigar Soni

Date: 18.05.2013



Rev No: R1

Scale: N.T.S

Sheet: 4

Power Dist. Board
Client:- M/s. (n) CODE SOLUTIONS
A Div. OF GNFC Ltd.
Ahmedabad

CMX: MAINS CONTACTOR Aux. CONTACTOR

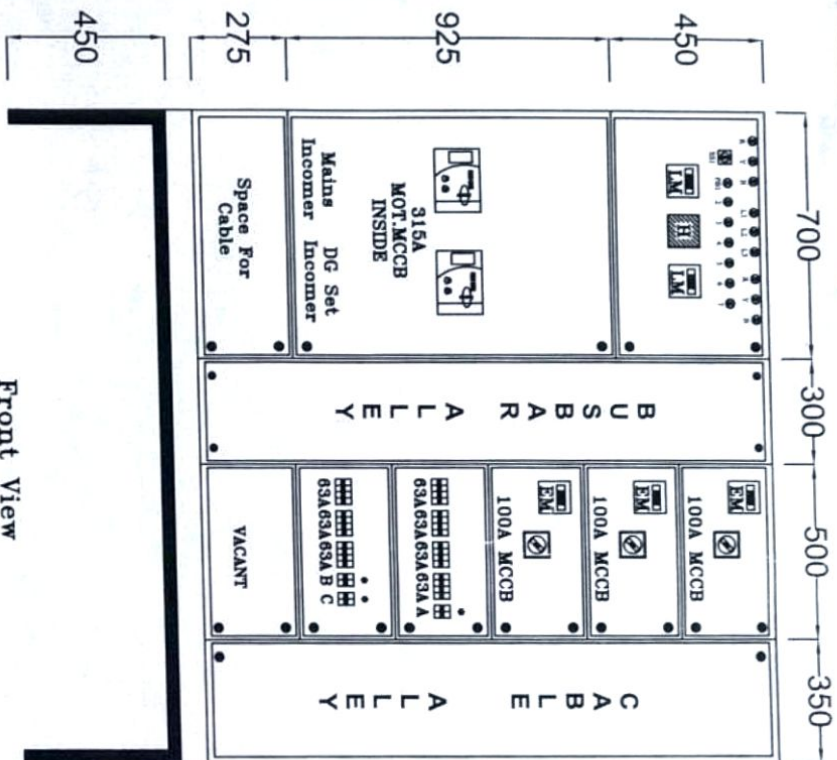
MCCB 1: MAINS MCCB

Title: MAINS MCCB CONTROL CKT.

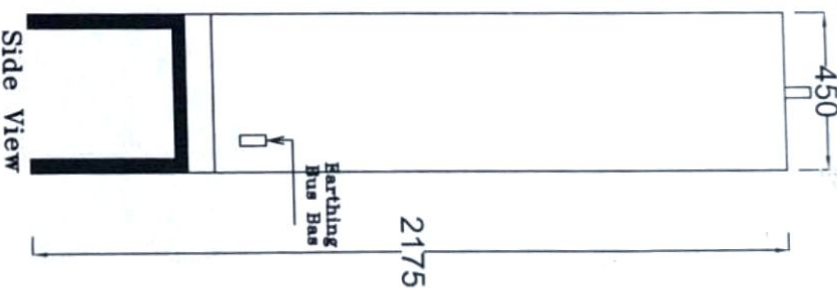


HI TECH ENGINEERS
A-702, Shapath-N, Opp. Karmaveer Club,
S.G. Road, Ahmedabad-380 051
Gujarat, India.
Ph. No. +91-79-30072077, 30072078
Email: info@hitechcontrolpanel.com

- L1: LOAD ON MAINS
- L2: LOAD ON DG SET
- L3: BATTERY CHARGER ON
- PB1: DG SET OFF/ON
- PB2: DG SET MCCB ON
- PB3: DG SET MCCB OFF
- PB4: MAINS MCCB ON
- PB5: MAINS MCCB OFF
- PB6: ACCEPT
- PB7: EM/STOP

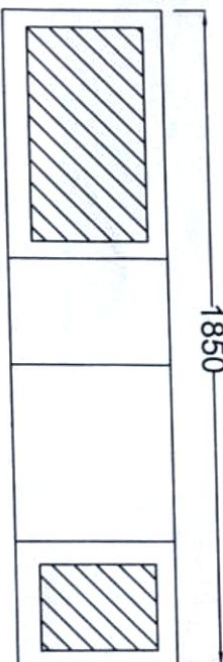


Front View



Side View

*A,B,C - 63A DP MCB



Bottom View

Height	Width	Depth
1725+450mm	1850mm	450mm

- STRUCTURE PARTITION : 2.0 MM M.S. COIL SHEET
- PLATES/DOORS : 2.0 MM M.S. COIL SHEET
- PAINT : POWDER COATED EPOXY PAINT SYSTEM GREY RAL 7032
- CABLE ENTRY : 1/2-BOTTOM, 0/2-BOTTOM
- FINISH MATERIAL : PVC (CURRENT DEN. 150-0-0A)

G.A. Drawing

HI TECH ENGINEERS

4-702 Shapath-IV Opp. Karmaveer Club
S.C. Road Ahmedabad-380 001
Gujarat India.
Ph. No. +91-79-30072077/30072078
Email : support@hitechengineers.com

Customer Remark

Sr.No: HE/NS/001/13

Approved:

Checked: Sanjay Modi

Prepared: Parthiv Vania

Date: 11.05.2013



Title

Main Power Distribution Panel

(h) CODE SOLUTIONS.

A DIVISION OF GNFC LTD.



4-702 Shapath-IV Opp. Karmaveer Club
S.C. Road Ahmedabad-380 001
Gujarat India.
Ph. No. +91-79-30072077/30072078
Email : support@hitechengineers.com

LEGEND

- L1 - INDICATING LAMP (RED) - LOAD ON MAINS
- L2 - INDICATING LAMP (RED) - LOAD ON DG SET
- L3 - INDICATING LAMP (RED) - BATTERY CHARGER ON
- L4 - INDICATING LAMP (RED) - COMMON. FAULT
- SS1 - AUTO/MANUAL/OFF SELECTOR SWITCH
- LM1 - MULTIFUNCTION METER FOR MAINS
- LM2 - MULTIFUNCTION METER FOR DG SET
- H - HOOTER
- PB1 - MAINS SUPPLY ON
- PB2 - MAINS SUPPLY OFF
- PB3 - DG SET STOP/START
- PB4 - DG SET SUPPLY ON
- PB5 - DG SET SUPPLY OFF
- PB6 - ACCEPT

LEGEND

- MCB 1-3 - MAINS CONTROL MCB
- MCB 4 - CONTROL MCB FOR MOTOR MECH. OF MAINS MCCB
- MCB 5 - CONTROL MCB FOR U/V RELEASE OF MAINS MCCB
- MCB 6-8 - DG SET CONTROL MCB
- MCB 9 - CONTROL MCB FOR MOTOR MECH. OF DG SET MCCB
- MCB 10 - CONTROL MCB FOR U/V RELEASE OF DG SET MCCB
- MCB 11 - 24V DC BATTERY CHARGER MCB
- CAX - DG SET CONTROL CONTACTOR
- CMX - MAINS CONTROL CONTACTOR
- A1 - DG SET STOP/START RELAY
- A3 - COMMON FAULT Aux. RELAY
- A2 - FAULT ACCEPT Aux. RELAY

Customer Remarks:

Sr.No: HE/NC/001/13

Approved: 00

Checked: Sanjay Modi


Prepared: Jigar Soni

Date: 18.05.2013



Power Dist. Board
Client:- M/s. (n) CODE SOLUTIONS
A Div. OF GNFC Ltd.
Ahmedabad

Title: LEGEND



HI TECH ENGINEERS
A-702, Shapeth-N, Opp. Karmaveer Club,
S.G. Road, Ahmedabad-380 031
Gujarat, India.
Ph. No. +91-79-30072077,30072078
Email : info@hitechcontrolpanel.com